



SCC^{neo}

Approved cassette even better

With the SCC^{neo}, ANKER presents a worthy successor with all the advantages of the SCC^{plus} cash cassette and the functional plus points of the OCC. The proven SCC cash cassette is one of ANKER's most popular products and has established itself in the POS world with its durability and high-quality workmanship. Visually, the SCC^{neo} shines with a new striped design, which is a well-known recognition feature in addition to the practical interior layout.

By eliminating the butt edges, the SCC^{neo} is now visually uniform on every side. Another plus point is the „Easyclean“ surface. This makes the cassette better and easier to

clean. Dirt and grease have a much harder time settling in the material. The laterally covered base prevents the accumulation of dirt, for example from crumbs or onion skins.

The new standard cash cassette fits all SCC base plates already installed in the table. There is no change for you and your staff - the handy interior layout remains identical. The accessories from the predecessors are 100% compatible. This means that existing accessories, such as the coin cups, can continue to be used without any problems.



Empty cassette



Closed cassette



Optimized closure

THE SCC^{neo} AT A GLANCE

- 4.2 million opening cycles in DEKRA endurance test
- Easy to clean surface
- Protected base thanks to the new design
- Money insert can be removed separately
- Rear coin pockets adjustable in size



→ FUNCTIONAL DESIGN

The design of the established SCC has been retained. The coin insert can be removed completely. Coin cups from the previous SCC version can still be used without any problems.



Filled cassette with separated inserts

→ ELECTRICAL CONNECTION OPTIONS

Compatible with all systems.

→ CONNECTION CABLE

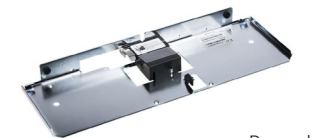
To order separately: RJ12 and SDL, other cables on request.



Filled cassette

→ LOCK ON THE CASH CASSETTE

2-position lock incl. 2 locks; identical, random or no lock, other solutions on demand.



Base plate

PRODUCT OVERVIEW	SCC ^{neo}
DIMENSIONS (W X D X H) IN MM CA.	459 x 155 x 100
WEIGHT IN KG CA.	1,7
MATERIAL	ABS plastic
COLOUR	Anthracite RAL 7021 ● Light grey RAL 9002 ○
NUMBER OF COMPARTMENTS	4/5 note, 8 (optionally expandable up to 9) coin compartments
ELECTR. VERSION IN VOLTS	12, 24, 36
INTERFACES	Compatible with all systems
CLOSURE // TYPE OF CLOSURE	2-position-lock/without lock// identical or random locks available, other closures on request
WEIGHABLE COIN CUPS	Optional



Note: The base plate is assigned to the cash desk and the cash cassette to the operator.