



RS38H

series

SOS Button for Emergency Response

In critical healthcare settings, every second is crucial. Medical professionals can quickly press the red SOS button, which can be pre-programmed to notify personnel to provide support in critical emergencies or to address healthcare violence. This helps reduce response times to incidents.



Keep All-day Productivity with over 14hrs of Battery Life

The RS38H is equipped with long-lasting batteries, ensuring continuous operation throughout the day, and it can be used 24/7 with hot-swapped batteries, which do not require the device to be turned off or the workflow to be disrupted while swapping batteries and shifts.

Versatile Accessories for Enhanced Mobility and On-the-Job Efficiency

The RS38H's versatile accessories enhance convenience and comfort for medical professionals. The disinfectant-ready materials ensure hygienic use, while the silicone hand strap reduces holding pressure and easily adjusts to fit various hand sizes. The carrying clip allows for secure attachment to pockets or belts, providing hands-free mobility, making RS38H a practical and comfortable tool for daily healthcare tasks.

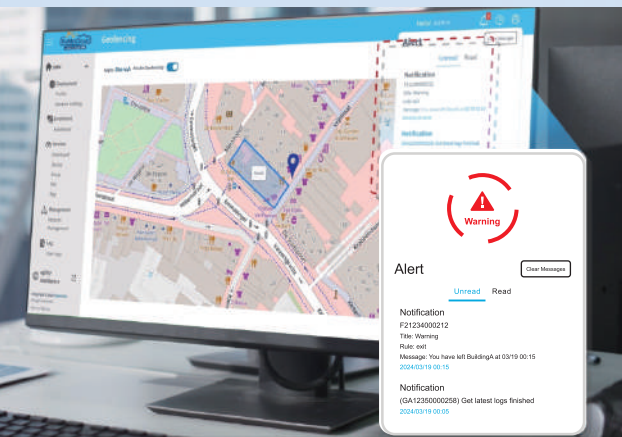


Keep Hygiene at Forefront

The RS38H is designed to withstand continuous disinfection in healthcare environments, tested with over 24 cleaning agents, including isopropyl and medicinal alcohol. It's also built for UV-C light sterilization, with extensive testing confirming its durability and performance during hospital disinfection. This rugged design supports frequent cleaning, helping maintain hygiene and a safe work environment.

Easily Convert the RS38H into an On-demand Mobile Workstation

When the RS38H mobile computer is connected to a workstation cradle, it allows for seamless information sharing and collaboration. Clinical workers can project the RS38H screen onto a nursing cart's monitor, providing instant access to larger displays for data entry, navigating complex applications, and sharing critical information such as EHRs, and patient check-in records. This setup improves workflow efficiency and enhances bedside care by eliminating the need for multiple devices switch.



Efficient Device Deployment and Data Protection with ReMoCloud

ReMoCloud supports Google Zero-touch enrollment for large-scale deployment, which allows users to quickly set up devices by scanning the barcode. The Geofencing* feature can ensure the security of sensitive medical data. IT managers can take immediate action if devices are stolen or removed from the workplace. The managers can track their location, use Device Wipe and Device Lock Function to remotely handle critical data.

*Geofencing is only available for WWAN models.

Easy Capture and Enter Wound Condition for Improved Documenting Operations

Clinical workers often face the challenge of manually confirming patient IDs, typing notes, and converting photos for EHR upload. With the RS38H's Pic 'n Fill™ OCR scanning solution integrated into wound care apps, they can now quickly confirm patient identity, capture wound photos, record voice notes, and instantly upload everything in DICOM format to the EHR with just one click.



Streamline Health Monitoring Data Entry for Improved Efficiency

The RS38H's Pic 'n Fill™ OCR scanning solution streamlines data entry for clinical workers by automatically capturing and filling critical information into medical systems. Nurses can quickly scan and capture vital signs, such as blood pressure and blood sugar, directly from monitors, reducing manual entry time and errors. This automation improves efficiency, allowing clinical workers to focus more on patient care.



RS38H

series

The CipherLab RS38H Healthcare Touch Mobile Computer is designed to enhance task efficiency and digital record management for medical professionals. Equipped with 5G, Wi-Fi 6E, and CBRS, it ensures fast access to critical information anywhere. The RS38H integrates barcoding, RFID, OCR, and mobile computing for flexible care in hospitals and homes.

Built for 24/7 clinical use, the RS38H features a durable design, including a Corning® Gorilla® Glass 6" touchscreen with a bright 630-nit display for easy information access. The device is built to withstand accidental drops from heights of up to 1.5 meters. Its disinfectant-ready housing and connectors are engineered to endure frequent cleaning, ensuring long-term reliability in demanding healthcare environments.



Android 13 (upgradable to Android 18)



Support 5G, Wi-Fi 6E, 2x2MU-MIMO and Bluetooth 5.2 for fast data transfer



6" and 630-nit sunlight-readable display

Quickly scans the barcode on the specimen tube or patient's wristband to confirm identity.

*The SE4720's Green LED aimer is safe for healthcare use.



16MP PDA camera for crisp imaging and quick focus



OCR capabilities for automatic text capture



Touch panel welcome input from stylus and fingers (bare, wet, and gloved)



Hot-swappable 4500mAh battery supports full-shift operation

*No need to disassemble any accessories when replacing the battery

USB Type-C Plug



protects connecting port during disinfection



Performance	Operating System	Android 13 (GMS) upgradable to Android 18
	CPU	Qualcomm QCM4490 Kryo Octa-core CPU 2.4 GHz
	Memory	8GB LPDDR5 SDRAM/128GB UFS3.1 ROM
	Expansion	Micro SD Card Slot x1 , SDHC up to 32GB, SDXC up to 1TB
	SIM	1 Nano SIM/ 1 eSIM
	Operating Power	Hot-swappable and rechargeable Li-Polymer 4500mAh
	Working Hours ¹	14+ hours (standard battery)
	Fast Charging ²	Standard battery 2 hours from 0% to Full Capacity
	Alert	1 tri-color LED, 1 bi-color LED, vibrator
	Interface Supported	8-pin I/O & USB 3.1 Gen 1 Type-C with OTG
Wireless Communication	WWAN	GSM:850/900/1800/1900 ; WCDMA: B1,B2,B4,B5,B6,B8, LTE:B1/B2/B3/B4/B5/B7/B8/B12/B13/B14/B17/B18/B19/B20/B25/B26/B28/B29/B30/B38/B39/B40/B41/B42/B43/B48/B66/B71 5G-NR FR1:n1/n2/n3/n5/n7/n8/n12/n13/n14/n20/n25/n26/n28/n29/n30/n34/n38/n39/n40/n41/n48/n66/n71/n77/n78/n79 Soporta red privada (LTE/5G)
	WLAN	IEEE 802.11 a/b/g/n/ac/d/h/i/r/k/v/w/mc/ax, support fast roaming DBS(Dual Band Simultaneous Support), WiFi6E(802.11ax), MU-MIMOx2
	WPAN	Bluetooth® 5.2, Class 2, V2.1 Enhanced Data Rate(EDR), V4 .2 Bluetooth Low Energy (BLE)
	GPS ³	GPS , GLONASS, Galileo, Beidou, QZSS, Dual-Band GNSS, a-GPS, supports XTRA
Data Capture	Barcode Scanning	1D/2D Imager(Standard Range SE4720)
	RFID Read / Write	Full tags support base on NFC forum, ISO14443A&B, FeliCa, ISO15693. Support NFC (Peer-to-Peer, Card Reader, Card Emulation)
	Camera	Rear 16 Megapixels PDAF with LED flash / Front: 8 Megapixels fixed focus
Characteristics	Display	6" FHD + 1080(W) x 2160(H) / Outdoor visibility 630 nits (typ), optically bonded Touch Panel
	Touch Panel	Corning® Gorilla® Victus, Two-mode supports glove and wet finger. Capacitive touch supports stylus, bare or gloved fingertip input multi-touch, allow water rejection and wet finger. Anti-fingerprint coating.
	Interactive Sensor Technology	Light sensor, Proximity sensor, Motion sensor (Accelerometer, G-sensor), E-compass (Magnetometer, Barometer), Gyroscope
	Keypad	1 programmable key(SOS key), volume up and down keys, left and right trigger keys, power keyndido
	Audio	Dual Speaker (85dB at 40cm), 3 microphones with echo and noise reduction
	Size (LxWxH)	165.4 x 78.5 x 15 mm
	Weight ⁴	268g (with 4500mAh battery)
User Environment	Operating Temperature	-20°C to 50°C / -4°F to 122°F
	Storage Temperature	-30°C to 70°C / -22°F to 158°F (without battery)
	Humidity (non-condensed)	Operating 10% to 90% / Storage 5% to 95%
	Impact Resistance	IP65 & IP68, 1000 tumbles at 0.5 m; 1000 tumbles at 1 m with rubber boot, Standard: 1.5 m (5 ft.) multiple drops to tile over concrete per MIL STD 810H With rubber boot: 1.8 m (6 ft.) multiple drops to concrete over room temperature per MIL STD 810H
	Electrostatic Discharge	± 15 kV air discharge, ± 8 kV contact discharge
Regulation Compliance	LTE : CE, FCC, IC, NCC, TBL, JRL, BIS, WPC, WEEE, RoHS, REACH, CA65, TSCA, BC, NrcAN, NBTC SOLO WI-FI 6 : SRRRC, CCC, BSMI, NCC, CE, FCC, IC, WEEE, RoHS, REACH, CA65, TSCA, BC, NrcAN	
Development Support	Android 13.0 SDK, HTML 5 API, Reader API (Java/Xamarin/.NET MAUI)	
Application Software	Reader Config, Terminal Emulation, Button Assignment, Device Health Dashboard, LogGen, AppLock, BT Printer Mate,A-Demo, Signature Capture, HF RFID, Configuration, Ping Tool, Software Trigger key, Enterprise Settings, SIP Controller, BarcodeToSetting, EZConfig, Ezedit, Chrome, OCRConfig,	
Certified Application	SOTI MobiControl, AirWatch, Ivanti, ReMoCloud, EnDeCloud	
Accessories	Single charging cradle, Workstation Connect Cradle, 4-slot battery charger, 4-slot battery and 4 terminal charger, 5-slot terminal charger, Hand strap, Carrying Clip,Screen protector, USB Type-C plug	
Warranty	1-year standard warranty	

1. Minimum hours under WLAN and 2D scanning per 20 seconds, LCD 50% backlight and speaker on (volume is default) at 25°C, RFID off / Bluetooth® off / IEEE 802.11 a/b/g/n/ac on. The test is based on one broadcasting packet per second.
 2. Charger/Cable must have QC 4.0 or PD 3.0 above certification. 2 hours Fast Charging time from 0% to Full Capacity (standard battery) with above 27W QC/PD adapter. 3 hours Fast Charging time from 0% to Full Capacity (extended battery) with above 27W QC/PD adapter.
 3. GPS function is only available for WWAN models.
 4. Maybe different with variant hardware configurations.

ACCESSORIES



Single Charging Cradle / Workstation Connect Cradle



4-slot Battery Charger



4-slot Battery and Terminal Charger



5-slot Terminal Charger



Carrying Clip



Hand Strap



Screen Protector



USB Type-C Plug



Headquarters
CIPHER Lab Co., Ltd.

CIPHER Lab China

CIPHER Lab USA

CIPHER Lab Europe

12F, No. 333, Sec. 2, Dunhua S. Rd., Da'an Dist., Taipei City 106033, Taiwan
Tel: +886 2 8647 1166 Fax: +886 2 8732 3300

3115 Room, No.317 Xianxia Road, Changning District, Shanghai, China 200050
Tel: +86 21 3368 0288 Toll Free: +86 400 920 0285 Fax: +86 21 3368 0286

2552 Summit Ave. STE 400 Plano, Texas 75074, USA
Tel: +1 469 241 9779 Toll Free: +1 888 300 9779 Fax: +1 469 241 0697

Cahorslaan 24, 5627 BX Eindhoven, The Netherlands
Tel: +31 (0) 40 2990202